



SLIDING DOOR SYSTEMS
ST4-600 LIFT & SLIDE / ST VISION PLUS

ST4-600 Lift & Slide

- + The ST4-600 Lift & Slide door exhibits the best thermal insulation across the sliding door range. It is available as a monorail, duo-rail and triple-track sliding door.

Multiple drainage
subsills available

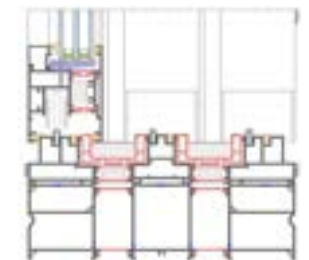
- Monorail



- Duo-rail



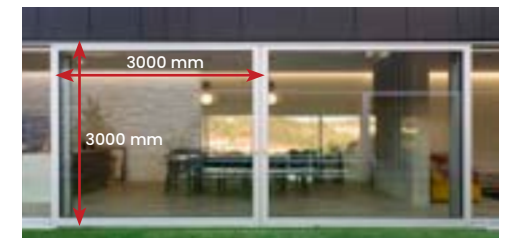
- Triple-track



- + Maximum Size/Weight Per Sash

- 3000 mm x 3000 mm or 300 kg

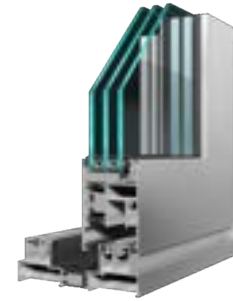
** Weight and windload dependant, please consult with our technical department for larger dimensions*



+ Performance

- Uw value as low as 0.9W/m²K*
- Wind resistance: Class 5 - 2000 Pa
- Air permeability: Class 4 - 600 Pa
- Security: Multi-point locking system
- Water tightness: Class 9a - 200 Pa
- Maximum glazing: 28 mm - 50 mm

* Determined by glass typology, please consult with our technical department



+ Handles

- Pull handles & finger pulls
- Handles come complete with "comfort unit", a special gas strut in the gearing that uses the weight of the sash to reduce the torque, making it effortless to lift the sash.



+ Lift & Slide Mechanism

- The bogies allow the door to be lifted for an ultra-smooth sliding motion and lowered for excellent weather seals, reducing air leakage.



+ Available Finishes

- Available in single or dual colour
- Qualicoat powder coating



ST Vision Plus

- + The ST Vision Plus maximizes natural light due to its minimalistic slimline design. It is available as a manual or motorized door and can also be installed as a 90° corner sash.

Multiple drainage
subsills available

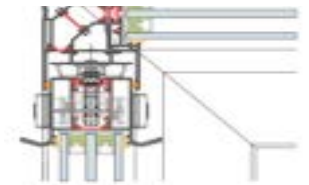
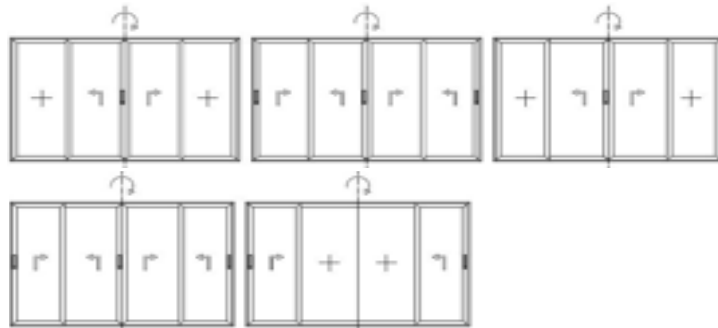
- Duo-rail



- Triple-Track

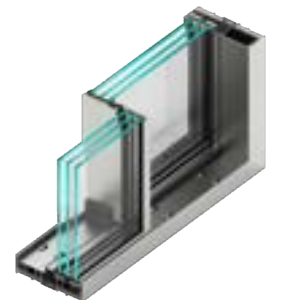


- 90° Corner



+ Ultra-smooth Sliding Door

- The ST Vision Plus has an intelligently designed stainless steel reinforced profile with integrated rollers in the frame, resulting in an ultra-smooth sliding door.



+ Performance

- Uw value as low as 0.9W/m²K*
- Air permeability: Class 4 - 600 Pa
- Water tightness: Class 9a - 600 Pa
- Wind resistance: Class C4 - 1200 Pa
- Security: Multi-point locking system
- Designed for triple glazing up to 52 mm

* Determined by glass typology, please consult with our technical department

+ Maximum Size/ Weight Per Sash

- 3000 mm x 3000 mm or 300 kg

* Weight and windload dependant, please consult with our technical department for larger dimensions

+ Slimline Design

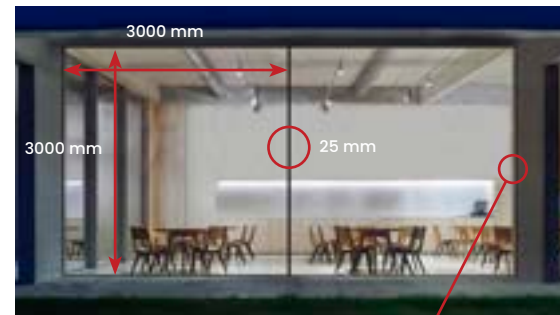
- Glass surface of 94%
- Central interlock of only 25 mm

+ Handle Design

- Integrated within locking system
- Minimalistic aesthetically pleasing design

+ Available Finishes

- Available in single or dual colour
- Qualicoat powder coating



ST Window Suite

+ Our high-performance window systems have been designed to meet the thermal requirements of architects and designers, significantly reducing energy use and operating costs. Each of our windows come with a single or dual colour finish and can be installed with matching rebated doors.

- ST60

- Uw value as low as 1.8 W/m²K
- Eco-friendly polyamide core
- Double glazing up to 32mm
- Certified to PAS 24 standards



- ST70
Concealed
Sash

- Uw value as low as 1.4 W/m²K
- Slim design with external surface of only 66 mm
- Double glazed units up to 40mm
- Available as inward opening & tilt & turn sash



- ST70 Hi

- Uw value as low as 0.97 W/m²K
- Thermally conductive foam cores
- Double or triple glazing up to 42mm
- Certified to PAS 24 & SBD standards



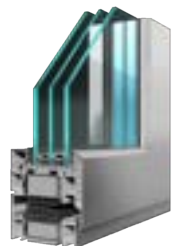
- ST80

- Uw value as low as 0.91 W/m²K
- Eco-friendly polyamide core
- Double or triple glazing up to 52mm
- Certified to PAS 24 standards



- ST90

- Uw value as low as 0.48 W/m²K (Passive House Standard)
- Double or triple glazing up to 62mm
- Thermally conductive foam cores
- Certified to Pas 24 and SBD standards



Tilt & Turn Window

- Our tilt & turn system combines the elements of window and door systems to give the user multiple options for ventilation.
- The tilt & turn sash opens inwards for increased safety, ventilation and easy upkeep.
- It can be integrated with our Juliet balcony to bring the outside in, without obstructing your view.



Life Enhancing Window

- Our life enhancing window was specifically designed to meet the needs of people with limited mobility enabling them to live independently in their homes for longer.
- The turn and tilt mechanism, combined with the positioning of the handle, allows the user to open and close the window with minimal effort.
- Our life enhancing window is compatible with all our ST windows systems and comes with multi-point locking systems for added security.



Available Finishes for our ST Window Systems

- Available in single or dual colour
- Qualicoat powder coating



APA
FACADE
SYSTEMS

Contact Us

If you require any extra information regarding:



Our aluminium window, door, facade, louvre or solar shading systems



An upcoming project you would like us to price



To organize a meeting or training day



To get in touch with a member of our team

Dublin

Unit 12, Parkmore
Industrial Estate,
Longmile Road,
Dublin, D12 VXH9
Tel: +353 (0) 1 450 9102

Leeds

Suite 1
Kenburgh House,
28 Manor Row, Bradford
West Yorkshire, BD1 4QU
Tel: +44 (0) 1 274 591403

Boston

Regus Building,
75 State St, 1st Floor,
Boston, MA 02109,
United States
Tel: +1 617 854 6587