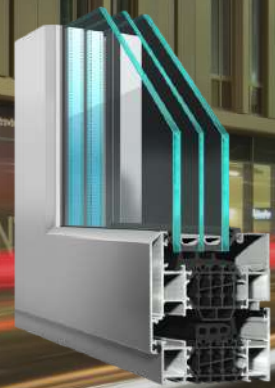
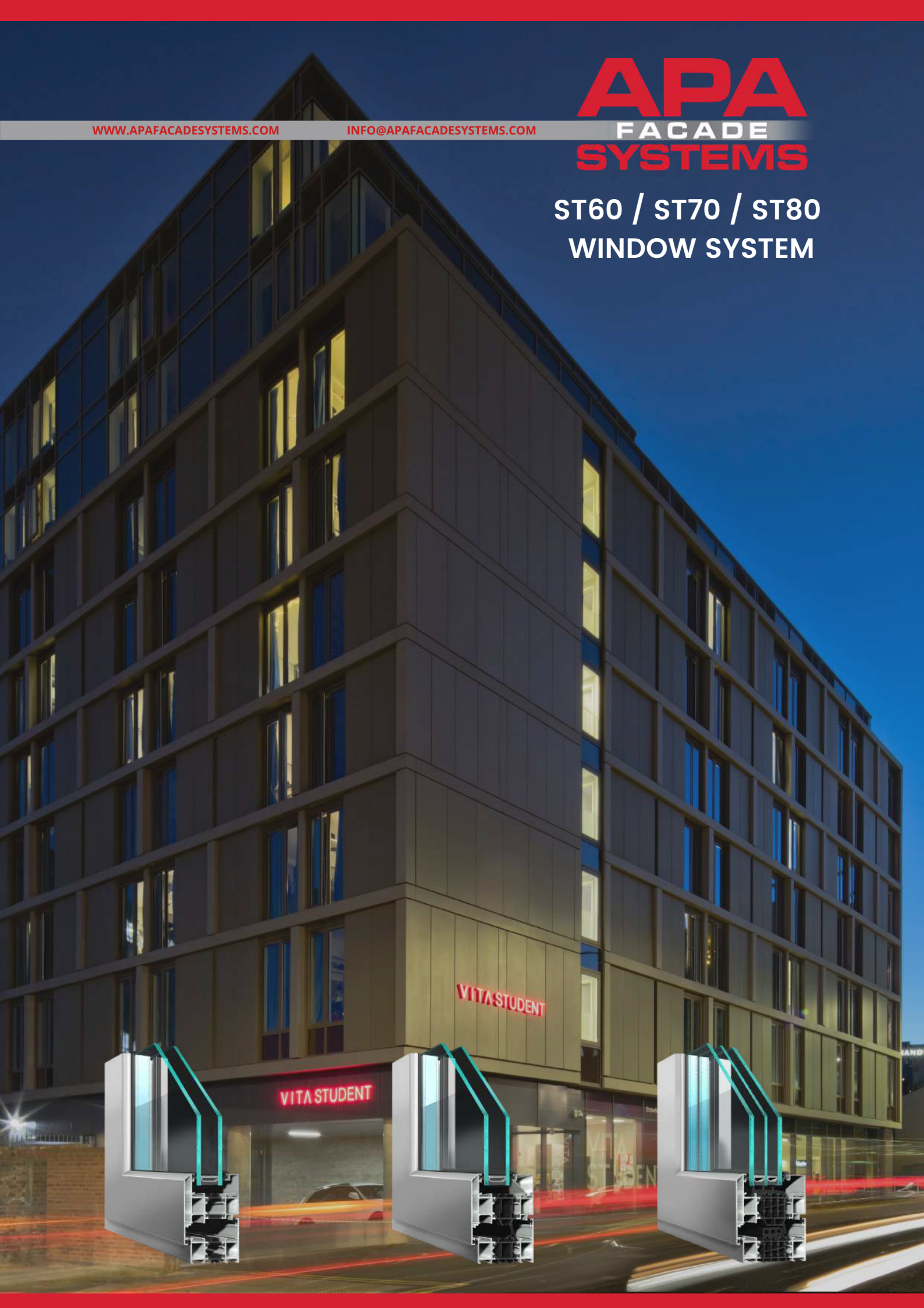


WWW.APAFACADESYSTEMS.COM

INFO@APAFACADESYSTEMS.COM

**APA**  
FACADE  
SYSTEMS

ST60 / ST70 / ST80  
WINDOW SYSTEM





## Design

Our high-performance ST60/70/80 incorporate a variety of types and styles incl. tilt & turn, casement, top-hung, bottom-hung and parallel sash. All our systems have multi-point locking facilities for added security and the same sight lines and dimensions. The versatility of the locking mechanism used in our ST window systems permits the incorporation of extra-large sashes into the fenestration or facade.

Thermally efficient polyamide cores (24mm - 44mm), allow you to value engineer the project to suit thermal requirements. Depending on the chosen system, the glazing aperture can vary from 28mm - 52mm, allowing a choice of infill panels to suit thermal and acoustic performance requirements.

## Properties of our ST60, ST70 & ST80 Window Systems

- Includes multi-point locking for added security
- Excellent thermal performance
- Eco-friendly polyamide core
- Glazing range from 28mm - 52mm, depending on chosen system
- Identical sightlines throughout
- Can be pre-assembled in-house saving installation time/cost
- Available in single, dual-colour or anodized finish
- Matching rebate doors available
- Evaluated and tested to the highest BS EN standards

## Opening Possibilities

- Side and top hung casement
- Bottom hung open in/out
- Side hung open in
- Tilt and Turn
- Life Time Homes Tilt and Turn
- Parallel Sash (ST60 & ST70)

## Sustainability

Most of the components and materials used in our fenestration systems have been designed and selected for their end of life recycling capabilities and their durability. With a life span of up to 30 years, maintained annually, our ST window systems are the perfect choice for the most demanding and desirable commercial, institutional and residential developments.

## Integratable with Our Life Enhancing Window System

APA Facade Systems have designed the Life Enhancing window to meet the needs of people with limited mobility. This turn and tilt system is compatible with our ST window suite. It is easy for the user to operate because of the convenient location of the handle at the bottom of the window.

- Meets all the requirements of the Lifetime Homes Scheme in the UK
- Easy to operate for trickle or purge ventilation
- Compatible with all of our ST window systems
- Fully tested to BS EN standards
- Suggested maximum size of 900mm x 1500 mm



Contact us if you require any extra information regarding:



Our aluminium window, door, facade, louvre or solar shading systems.

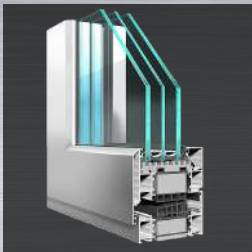


To organise a CPD or training day.

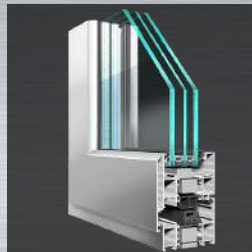


To get in touch with a member of our technical department.

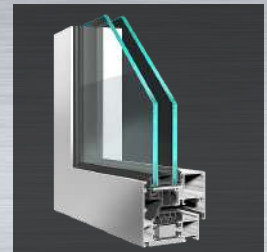
## Our Window & Door Suite



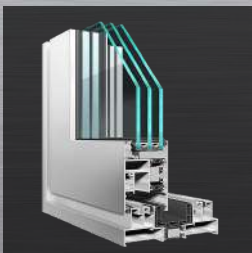
ST90 Window System



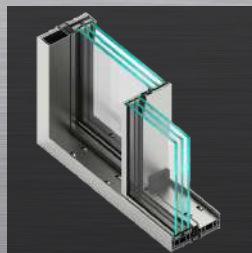
ST70 HI Window System



ST70 Concealed Sash



ST4-600 Lift & Slide



ST Vision Plus



ST Millennium Door