

WWW.APAFACADESYSTEMS.COM

INFO@APAFACADESYSTEMS.COM

**APA**  
FACADE  
SYSTEMS

## Life Enhancing Window

Specifically Designed For People With Limited Mobility



Available With Our Range of ST Windows

## Compliant with Life Time Homes Scheme in the UK

Our Life enhancing window is fully compliant with all of the requirements of the Lifetime Homes Scheme in the United Kingdom.

## Compatible with our ST Window Suite

Our Life Enhancing Window is compatible with our ST window suite. It comes with a choice of thermally efficient polyamide cores ranging from 24mm - 44mm.

Depending on the system, the glazing aperture can vary from 28mm - 52mm, allowing a choice of infill panels to suit thermal and acoustic performance requirements.



## Designed for People With Limited Mobility

Our Life Enhancing Window has been designed to make it easier for people with limited mobility to live independently at home for longer.

By positioning the handle at the bottom of the window, this turn and tilt system gives the user continuous access to the handle, allowing them to open and close the window with minimal effort.





## Turn & Tilt

The turn and tilt mechanism on our Life Enhancing Window allows the operator to easily open or close the window for trickle or purge ventilation. Turning the handle 90° the window will open inwards like a casement window. When the handle is turned 180°, the window will tilt inwards at the top like a hopper window. The opposite to our tilt and turn. Unlike the tilt and turn system, the handle has been designed and adapted to operate from the bottom of the frame to suit the needs of people with limited mobility, giving them access to open or close the window with minimal effort.



## Properties

- Specifically designed and adapted to suit the needs of people with limited mobility
- Meets all requirements of the Lifetimes Home Scheme in the UK.
- Easily accessible from a mobility chair
- Available with all of our window systems
- Eco-friendly polyamide core
- Glazing options of 28mm - 52mm
- Identical sightlines throughout
- Can be pre-assembled in-house saving installation time/cost
- Available with single or dual finish
- Matching rebate doors available
- Suggested maximum size of 900mm x 1500mm

Contact us if you require any extra information regarding:



Our aluminium window, door, facade, louvre or solar shading systems.

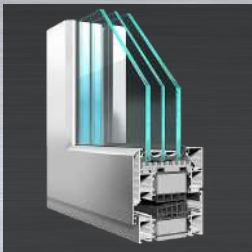


To organise a CPD or training day.

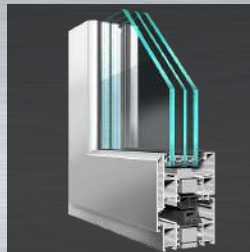


To get in touch with a member of our technical department.

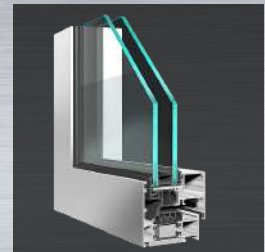
## Our Window & Door Suite



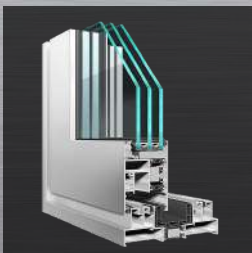
ST90 Window System



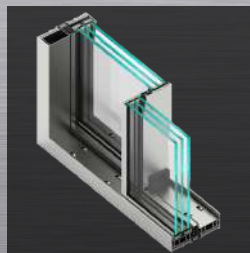
ST70 HI Window System



ST70 Concealed Sash



ST4-600 Lift & Slide



ST Vision Plus



ST Millennium Door