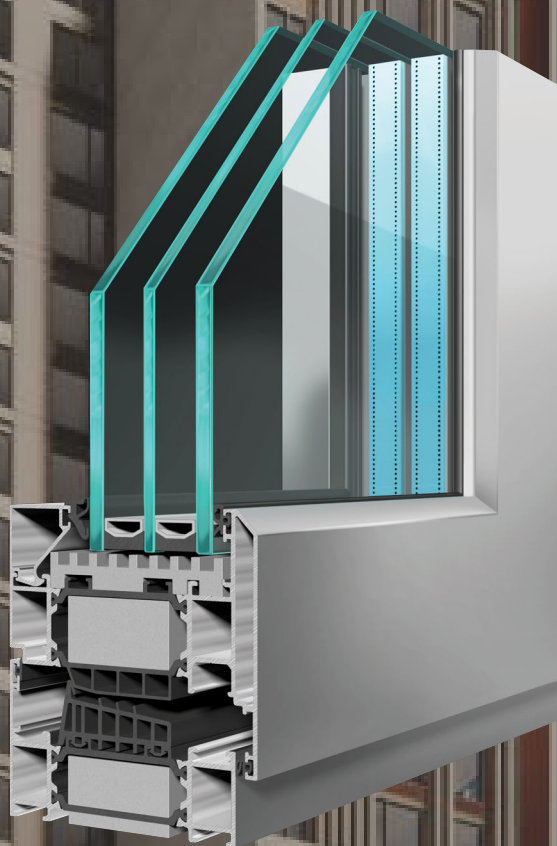


Designed for
**Ultimate
Thermal
Efficiency**

ST90 Window System

Whole Window U_w
As Low As
 $0.48 \text{ W/m}^2\text{K}$

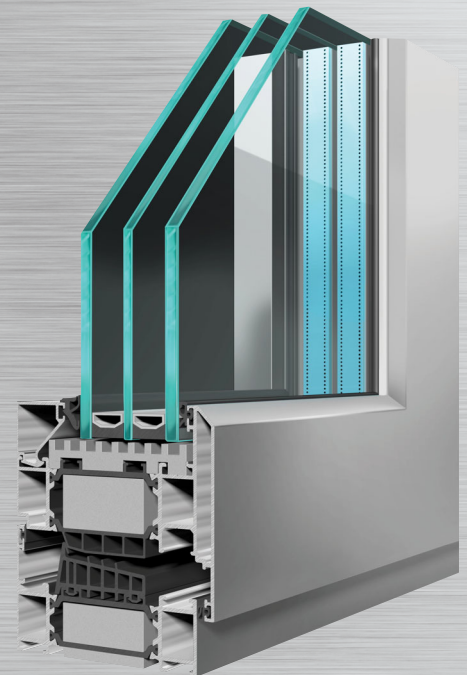




Design

Our ST90 window system is a leader in the evolution of fenestration systems. It has been specifically designed to meet the ever-increasing thermal efficiencies required by architects, design teams and their clients.

Our designers used the most up to date thermally conductive technology when designing this window to form a secure and highly insulated barrier against heat loss.



Durability

Most of the components and materials used in our fenestration systems have been designed and selected for their end of life recycling capabilities and their durability. With a life span of up to 30 years, maintained annually, the ST90 window system is the perfect choice for the most demanding and desirable commercial, institutional and residential developments.

Opening Possibilities

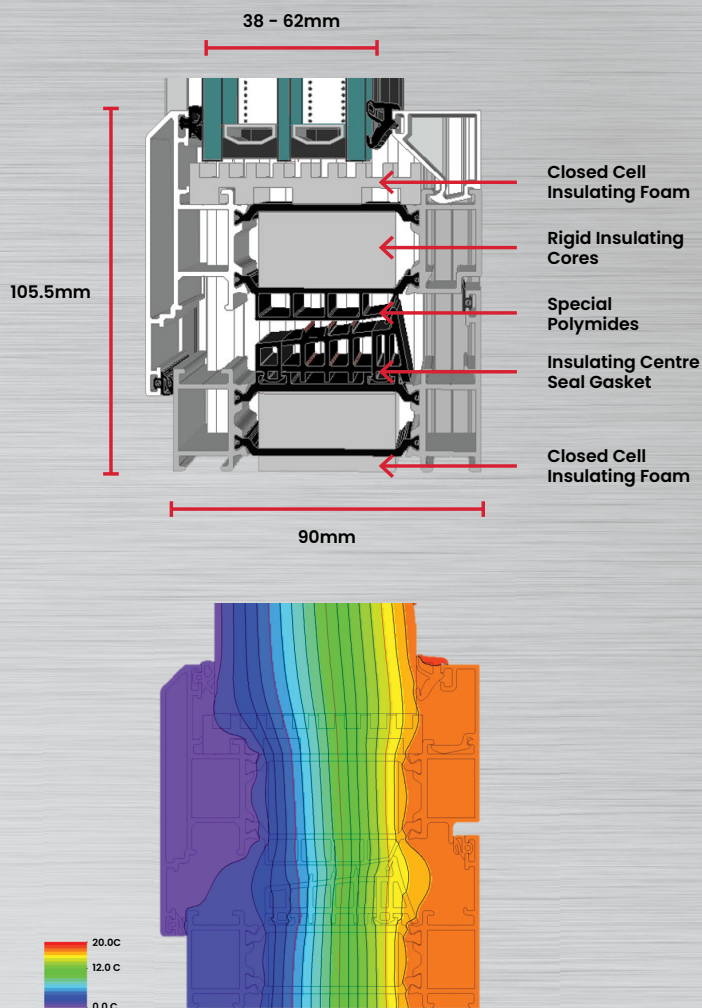
- Side and top hung open-out
- Bottom hung open-out (Hopper)
- Side hung open-in
- Tilt and Turn
- Life Time Homes Tilt and Turn
- Bottom hung open-in

Eco-Friendly

The eco-friendly tag placed on the ST90 window system is derived from the use of recycled aluminium and polyamides. In many cases our products can have up to 50% recycled materials used in their manufacture. The ST90 window system should be the first choice for architects and designers who prioritise the protection of our environment.

Properties

- Designed for the ultimate in thermal efficiency
- Whole window U_w value as low as $0.48 \text{ W/m}^2/\text{K}$
- Low frame U_f value of $1.0 \text{ W/m}^2/\text{K}$
- Tested to Pas 24 and SBD standards
- Elements of the window were chosen for their end of life recycling
- Tested to EN12101 smoke ventilation
- Single or dual colour available
- Triple or quadruple glazing up to 62mm in thickness
- New low conductive polyamides used in the window assembly



Performance Data

Whole window U_w value as low as:	0.48 $\text{W/m}^2/\text{K}$
Acoustic performance:	60 dB
Air tightness:	Class 4 - 600 Pa
Water tightness:	Class EN1050 - 1050 Pa
Wind load resistance:	Class 5 up to 3000 Pa

Contact us If you require any extra information regarding:



Our aluminium window, door, facade, louvre or solar shading systems.

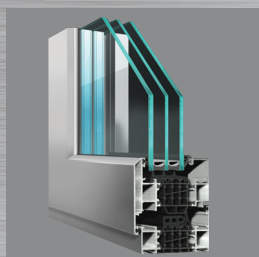


To organise a meeting or training day.

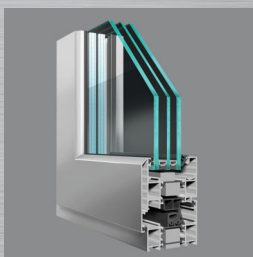


To get in touch with a member of our technical department.

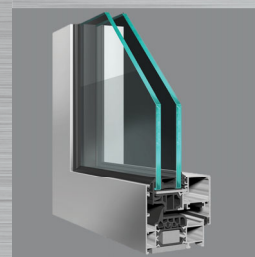
Our Window & Door Suite



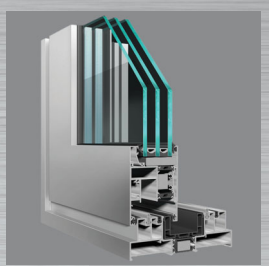
ST80 Window
System



ST70 HI



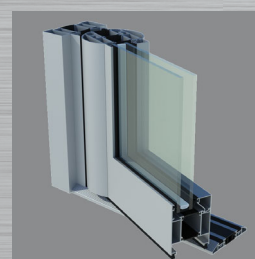
ST70 Concealed
Sash



ST4-600 Lift
& Slide



ST Vision
Plus



Commercial
Door Systems