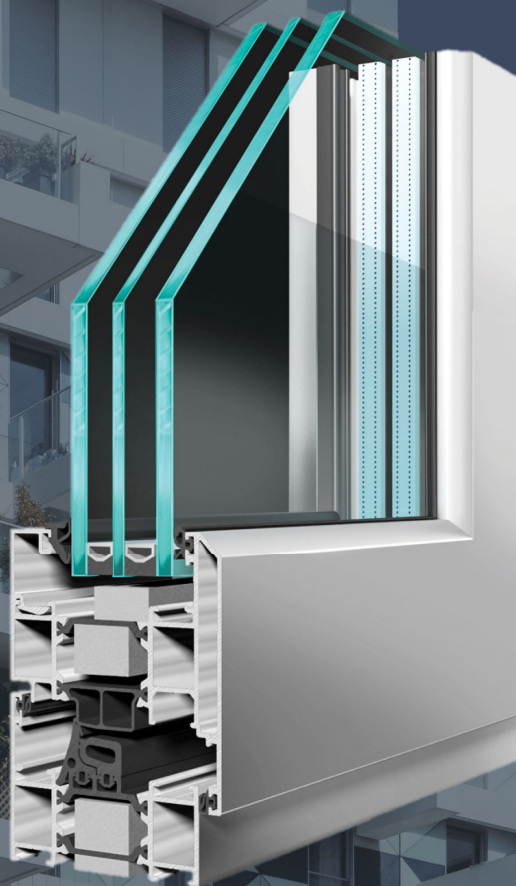


Evolution of the ST70

ST70 HI Window System

Whole Window U_w
As Low As
 $0.97 \text{ W/m}^2\text{K}$

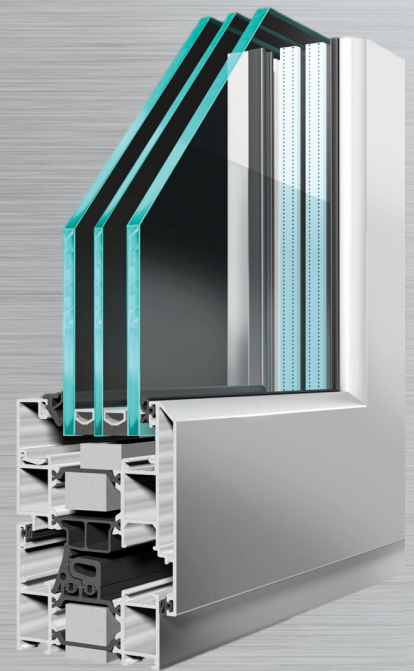




Design

Our ST70 HI window system has recently been upgraded by our designers to produce an enhanced thermal performance. Installed with triple glazed units, this system can now achieve a whole window U_w value as low as $0.97W/m^2K$.

The combination of new thermally efficient polyamide, new foams and an insulated centre seal increases the effectiveness of the barrier to low temperature, reducing or eliminating condensation.



Performance

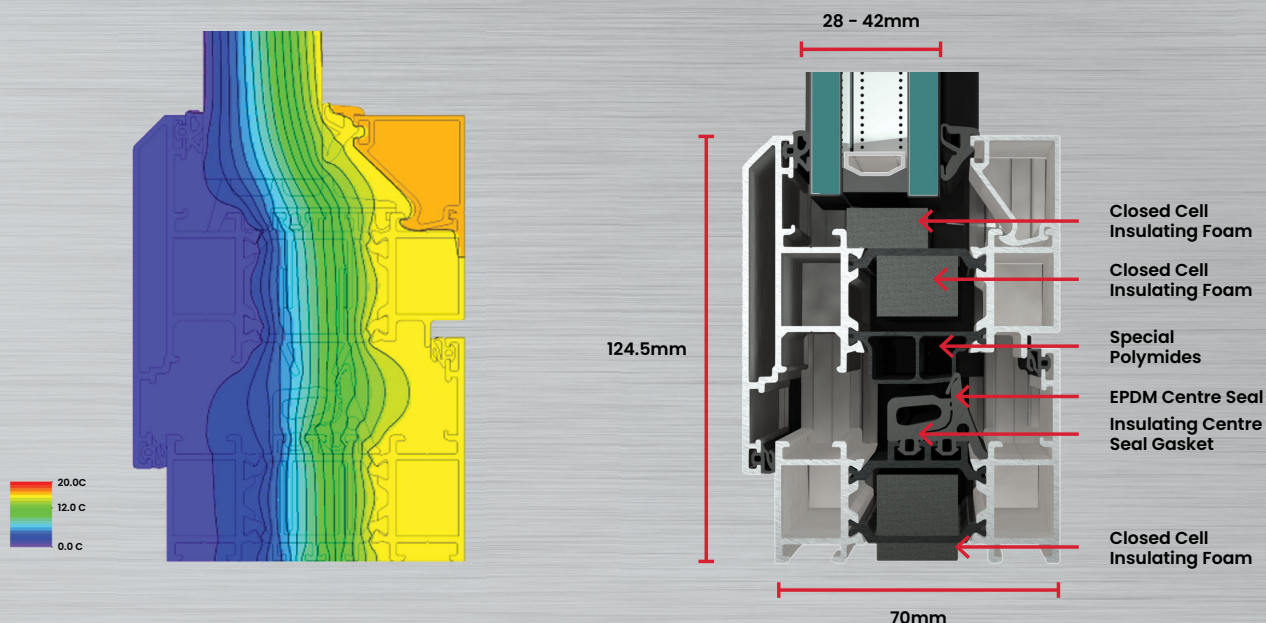
The ST70 HI is fully weather tested to BS6375. Its performance characteristics meet with the highest environmental standards across the aluminium range helping you achieve LEED and BREEAM certification. This window system is the perfect cost-efficient, eco-friendly solution for your next project.

Opening Possibilities

- Side and top hung open-out
- Bottom hung open-out (Hopper)
- Side hung open-in
- Tilt and Turn
- Life Time Homes Tilt and Turn
- Bottom hung open-in
- Parallel Sash

Durability

The ST70 HI's strong aluminium frame and flexible design allow you to incorporate extra large sash dimensions. These large sashes are installed with a multi-point, wrap around locking system giving you peace of mind. It has been tested to meet the requirements of Pas 24 and SBD.



Properties

- Whole window U_w value as low as $0.97 \text{ Wm}^2/\text{K}$ (Triple Glazed)
- Tested to Pas 24 and SBD standards
- Fabricated using recycled aluminium and plastic materials
- Tested to EN12101 smoke ventilation
- Single or dual colour available
- Double or triple glazing up to 42mm in thickness
- New low conductive polyamides used in the window assembly
- Can be pre-assembled in-house saving installation time/cost

Performance Data

Whole window U_w value as low as:	$0.97 \text{ W/m}^2\text{K}$
Acoustic performance:	60 dB
Air tightness:	Class 4 - 600 Pa
Water tightness:	Class EN1050 - 1050 Pa
Wind load resistance:	Class 5 up to 3000 Pa

Contact us If you require any extra information regarding:



Our aluminium window, door, facade, louvre or solar shading systems.

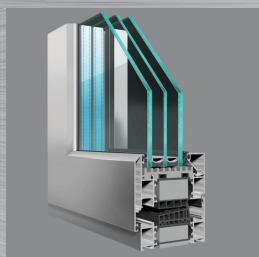


To organise a meeting or training day.

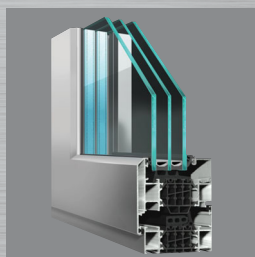


To get in touch with a member of our technical department.

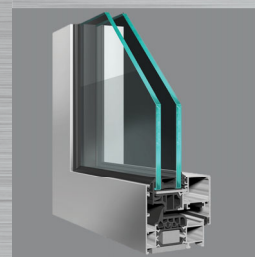
Our Window & Door Suite



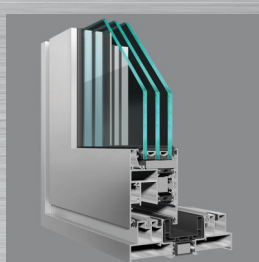
**ST90 Window
System**



**ST80 Window
System**



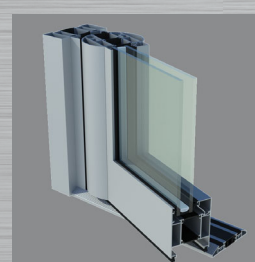
**ST70 Concealed
Sash**



**ST4-600 Lift
& Slide**



**ST Vision
Plus**



**Commercial
Door Systems**