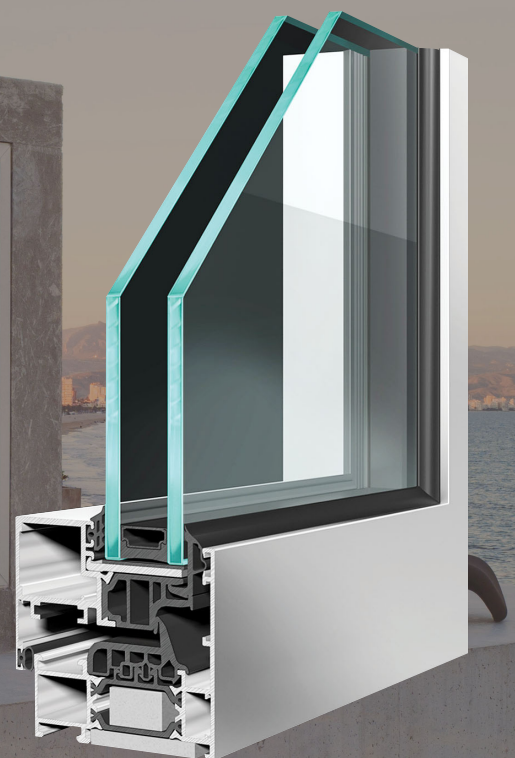


**ST70  
CONCEALED  
SASH**



**SLIM DESIGN WITH SURFACE OF ONLY 66MM**

## Design

APA Facade Systems ST70 Concealed Sash window has a slim design, with a surface of only 66 mm from the exterior. The slim profile provides the interior of the building with a substantial increase in luminosity.

A 35 mm thermally broken zone is created by using a variety of polyamide cores as part of the frame and sash. This allows for a thermal transmission as low as 1.4 W/m<sup>2</sup>K to be achieved when the ratio of glass to aluminium is correct, maximising its energy.

## Performance

The ST70 Concealed Sash meets all the BS/EN regulations demonstrating excellent water tightness, air permeability, and wind resistance values.

Even with its slim design, our concealed sash is available with large sash dimensions with a maximum size of 1200mm x 2400mm or 160kg.

With the possibility of glazing high-performance double glazed units up to 40mm thick, this highly insulated slimline window system is the ideal choice for apartments, houses, or student accommodation.

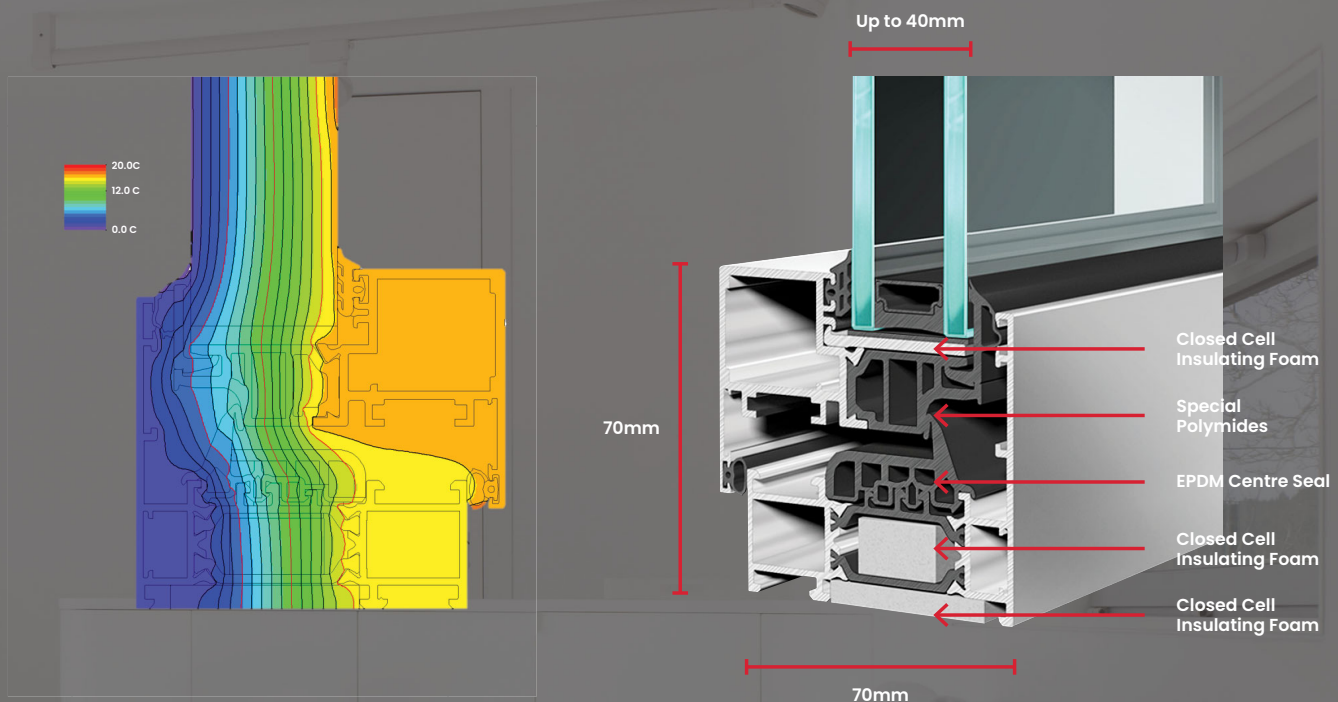
## Opening Possibilities

- Side hung open-in
- Bottom hung open-in
- Bottom hung open-out
- Tilt and turn



## Properties

- Whole window  $U_w$  value as low as  $1.4 \text{ W/m}^2\text{K}$
- Tested to Pas 24 and SBD standards
- Fabricated using recycled aluminium and plastic materials
- Double glazed units up to 40mm
- Exterior surface of 66mm
- Maximum Size/Sash - 1200mm x 2400mm
- Maximum Weight/Sash - 160kg
- Single or dual colour available - Qualicoat (RAL Colours)
- Can be pre-assembled in-house saving installation time/cost



## Performance Data

Whole window  $U_w$  value as low as:

Air tightness:

Water tightness:

Wind load resistance:

$1.4 \text{ W/m}^2\text{K}$

Class 4 - 600 Pa

Class E1650

Class 5

Reference test: 1200mm x 1400mm - 2 sashes

Contact us If you require any extra information regarding:



Our aluminium window, door, facade, louvre or solar shading systems.

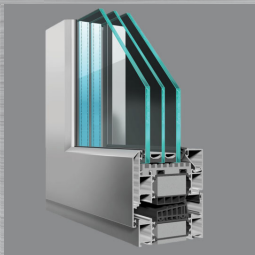


To organise a meeting or training day.

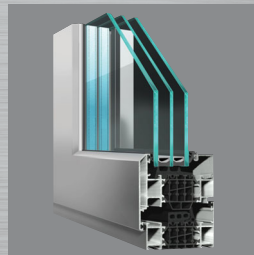


To get in touch with a member of our technical department.

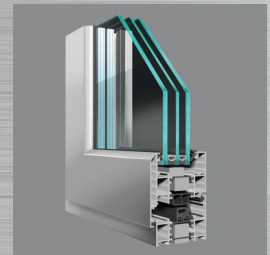
## Our Window & Door Suite



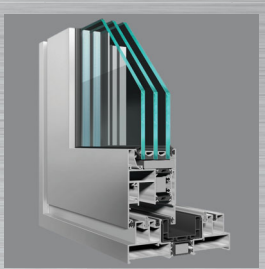
ST90 Window  
System



ST80 Window  
System



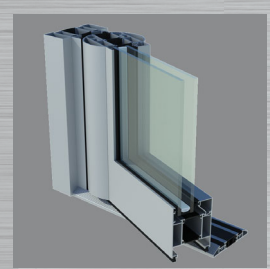
ST70 HI



ST4-600 Lift  
& Slide



ST Vision  
Plus



Commercial  
Door Systems