



# Reframe Your Perspective

Affordable Window & Door Systems

**APA**  
FACADE  
SYSTEMS



## Window & door systems designed to extend your living space.

APA Facade Systems design and manufacture a wide range of high-performance aluminium fenestration systems for residential projects. Our window systems are designed with the same sight lines and interchangeable components for maximum flexibility, minimum wastage and cost-effectiveness. Our Lift & Slide, Vision Plus, French Door, Tilt & Turn and Bi-Fold door systems have the highest thermal and acoustic performances available, keeping you warm during the winter and cool in the summer.



*Competitively priced  
high-performance  
fenestration systems.*



For over 40 years, APA Facade Systems have completed projects of all sizes from three-storey student accommodations to 22-storey high-rise apartment developments in Ireland, the UK and North America.



# ST4-600 Lift & Slide

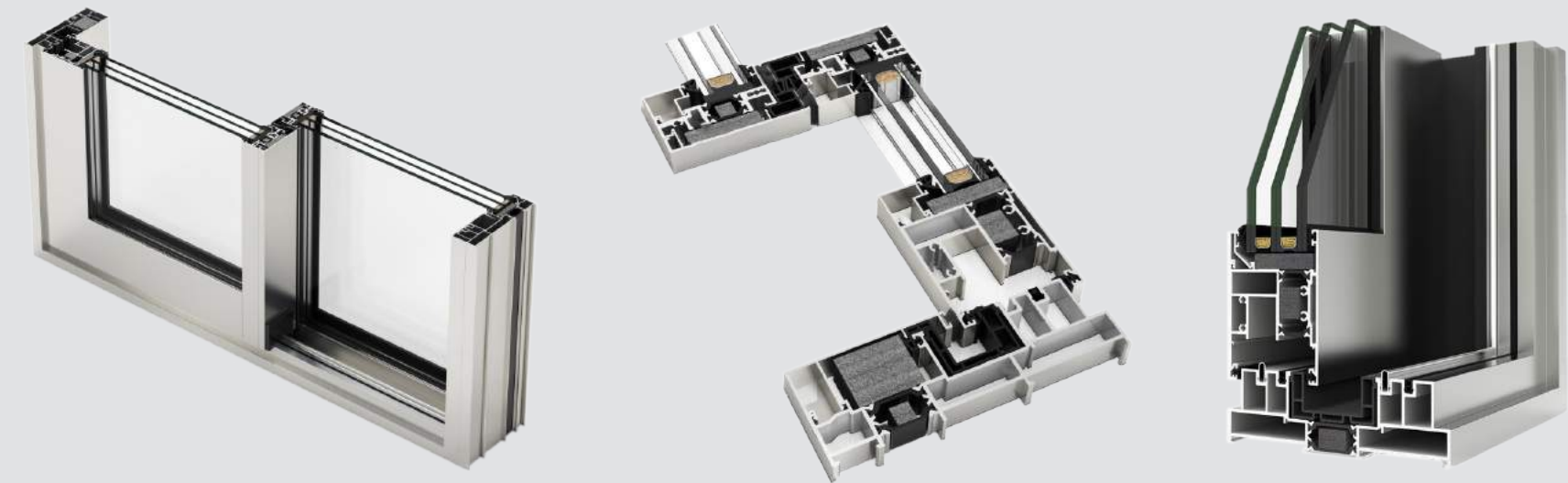
- Our ST4-600 Lift & Slide door system exhibits the best thermal insulation in all the sliding range, achieving transmissions as low as 0.9 W/m²K.
- Available with up to six sashes with a maximum sash size of 3300mm x 3300mm or 400kg.
- The opportunity to install double or triple glazed units up to 55mm significantly reduces noise pollution within the building.
- The ST4-600 Lift and Slide mechanism allows the door to be lifted for an ultrasmooth opening action and lowered for excellent weather seals and air leakage reductions.

**Opening Possibilities:** Multiple opening possibilities up to 6 sashes.



## Tech Features:

- Maximum sash size/weight 3300mm x 3300mm or 400kg.
- Available as manual or automated door system.
- Frames 160mm – 3 rails 251mm.
- 70mm sash.
- Possible glazing thickness up to 55mm.
- Polyamide strip 35mm thick in frame and 24mm in sash.
- 2mm profile thickness.
- Available in single and dual colour or anodised finish.
- Qualicoat powder coating.

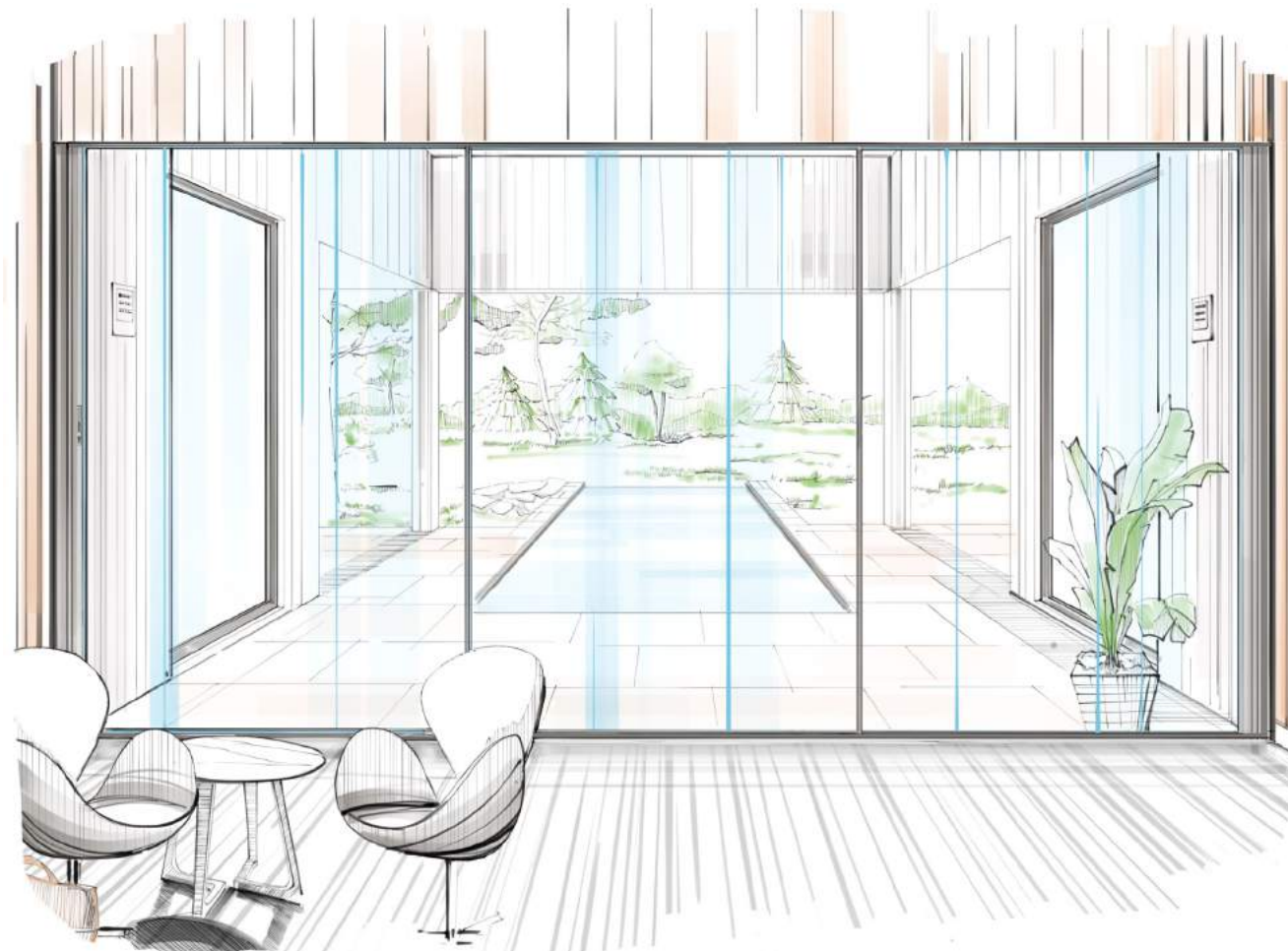




# ST Vision Plus

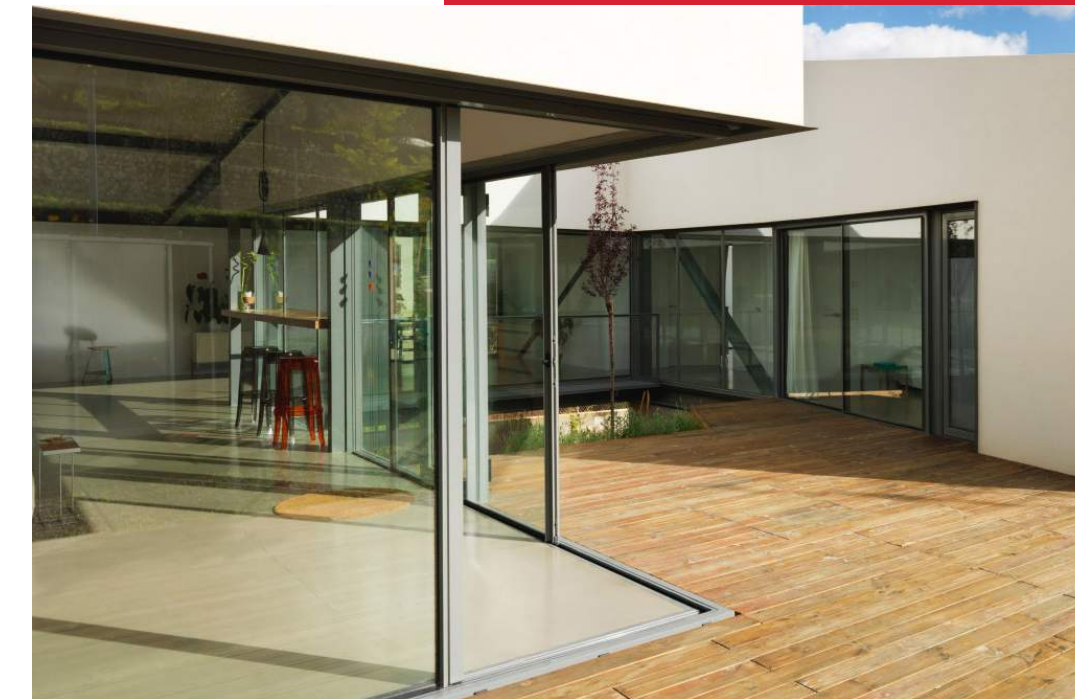
- Our ST Vision Plus sliding door system is designed for large dimensions, to maximise luminosity.
- It's available as a motorized or manual sliding door.
- It displays a 94% glass surface, with a slimline central interlock showing only 25mm of aluminium section.
- This slider incorporates rollers in the frame and the sashes come with a stainless steel reinforced channel, making it one of the smoothest sliding doors across the whole range.
- Available at 90-degree angle without the need for mullions – refer to the image on page 7.

**Opening Possibilities:** Multiple opening possibilities up to 6 sashes and 90 degree corner sash.



## Tech Features:

- Available at 90-degree angle without the need for mullions.
- Frame: 180mm, 3 tracks 278mm.
- Sash: 69mm.
- Max glazing opportunities: 54mm.
- Profile thickness: 2.0mm.
- Polyamide strip: 18mm to 40mm.
- Max size/sash: 4000 x 4000 (wind load dependent).
- Max weight/sash: 400kg manual / 700kg motorized.
- Available in single and dual colour or anodised finish.
- Powder coating: Qualicoat (RAL Colours).





# ST70 HI

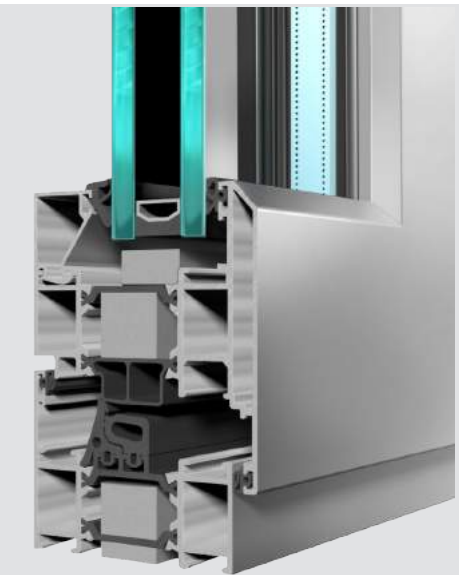
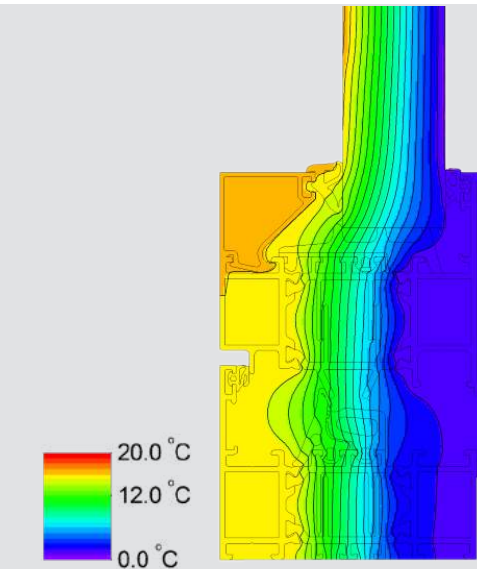
- Our ST70 HI window system has recently been re-designed producing an improved thermal performance.
- The combination of thermally efficient and eco-friendly polyamide, along with extruded open cell EDPM rubbers, increases the effectiveness of the barrier to low temperatures, reducing or eliminating condensation.
- With a glazing variant of 28 – 42mm, the ST70 HI significantly reduces noise pollution.
- Fully weather tested to BS6375 by a registered UKAS approved testing laboratory.

**Opening Possibilities:** Tilt & Turn, Casement, Hopper, Top Hung, Side Hung, Parallel Sash.



## Tech Features:

- Includes multi-point locking for added security.
- Superb thermal performance.
- Eco-friendly polyamide core.
- Glazing variant of 28mm – 42mm.
- Identical sight lines throughout.
- Matching rebate doors available.
- Available in single and dual colour or anodised finish.
- Qualicoat powder coating.
- Fully weather tested to BS6375 by a registered UKAS approved testing laboratory.



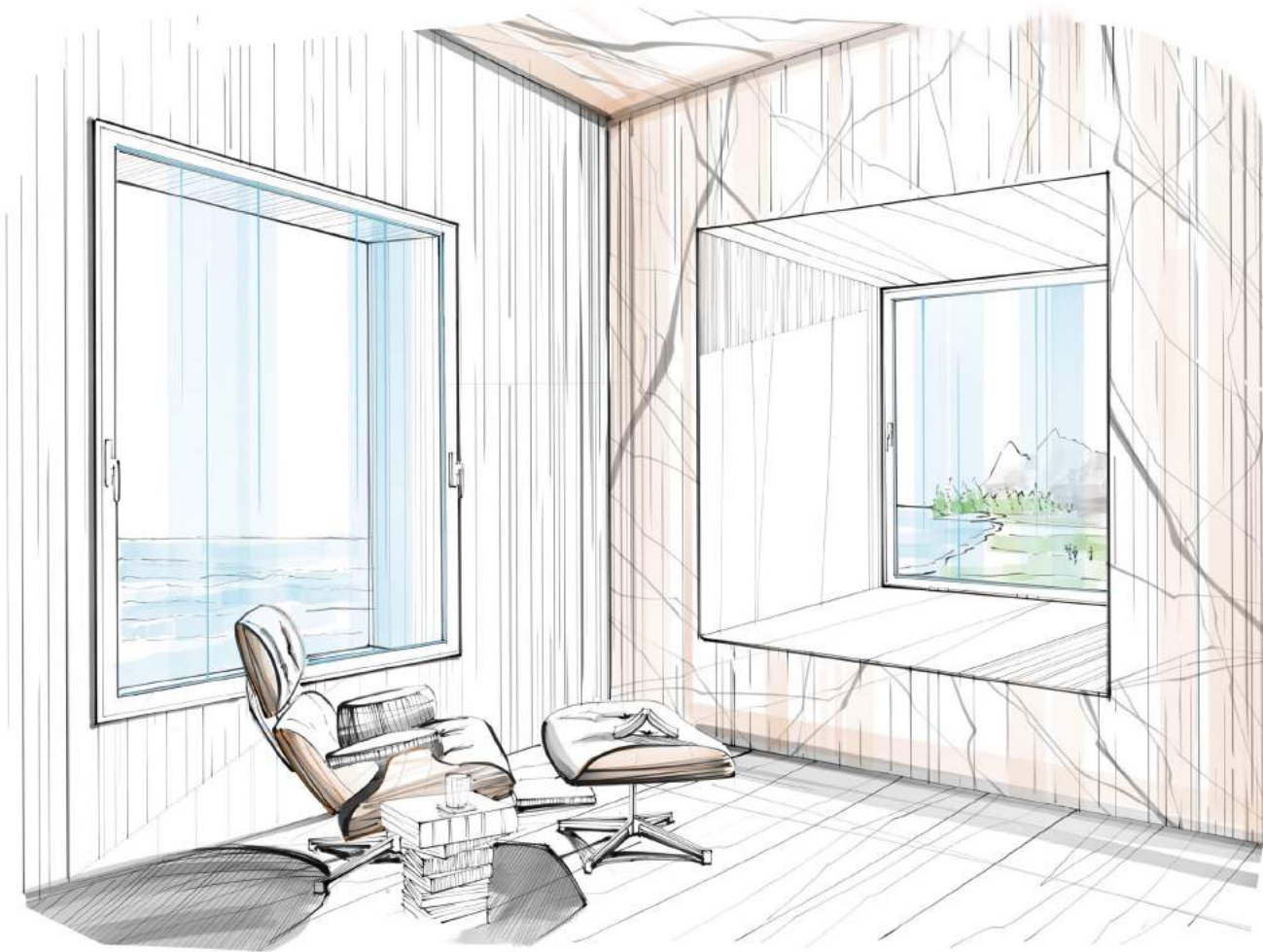
**APA**  
FACADE  
SYSTEMS



# ST70 Concealed Sash

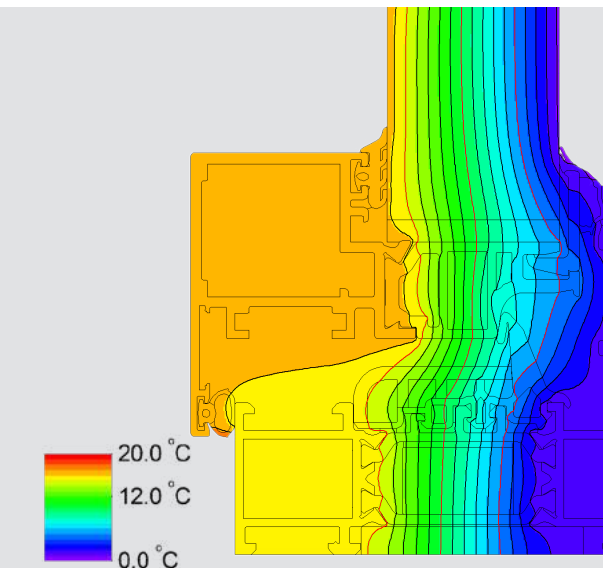
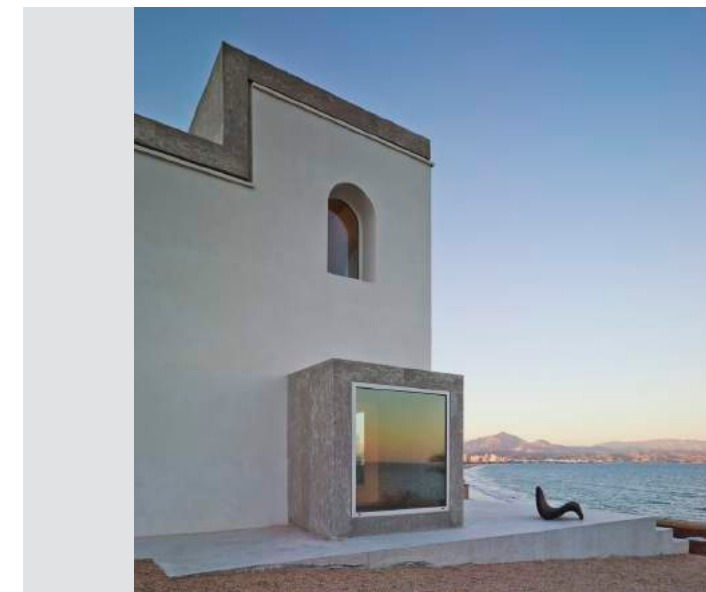
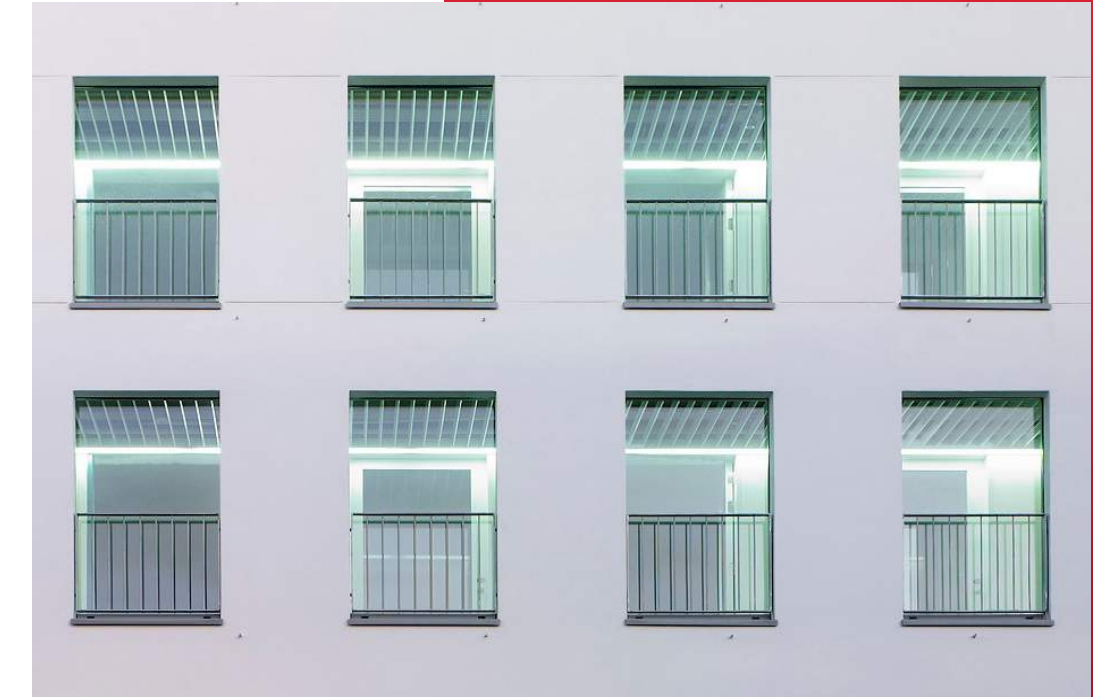
- Our ST70 Concealed Sash window has a slim design, displaying only 66mm from the exterior of the building, resulting in an increase of natural light.
- The ST70 Concealed Sash has excellent thermal transmissions, maximising its energy efficiency. This is due to a combination of a 35mm thermally broken area, and a polyamide core (from 24mm to 44mm) in the frame and sash.
- The possibility of installing high performance units up to 40mm thick, substantially increases the acoustic performance of the window system.
- It's fully tested to meet all the requirements of the BS EN regulations demonstrating excellent water tightness, air permeability, and wind-resistant values.

**Opening Possibilities:** Inward Opening Window, Tilt & Turn.



## Tech Features:

- Slim design with a surface of only 66mm from the exterior.
- 35mm thermally broken area.
- Insertion of 24mm - 44mm polyamide core.
- Values as low as 1.0W/m²k of transmission.
- A possibility of fitting 40mm high-performance units.
- Available in single and dual colour or anodised finish.
- Qualicoat powder coating.
- Fully weather tested to BS6375 by a registered UKAS approved testing laboratory.





# ST80

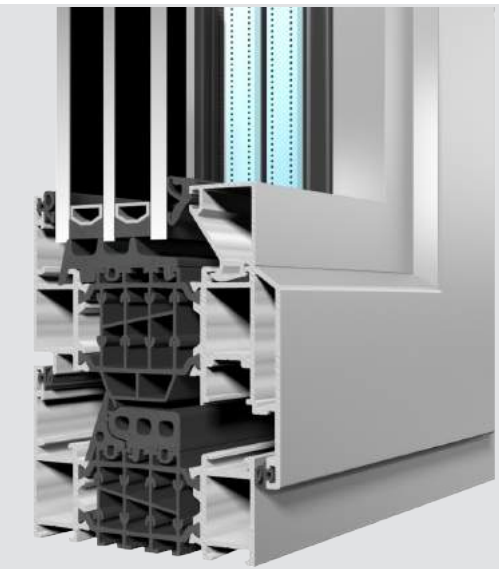
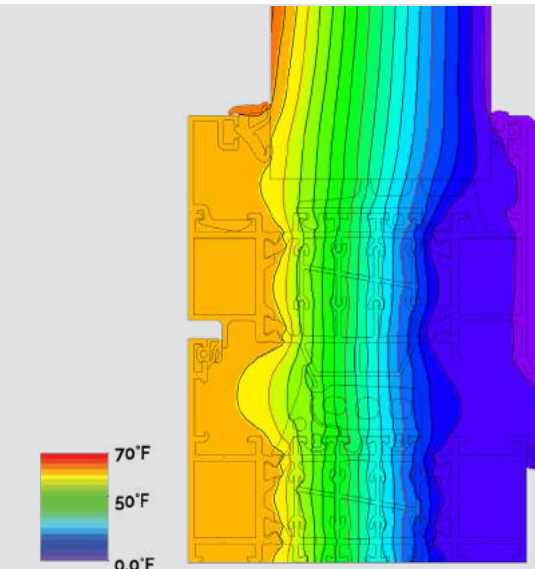
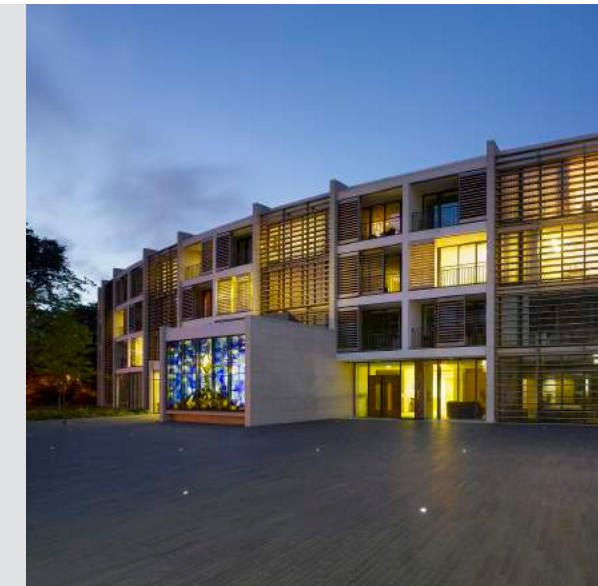
- The ST80 is designed using a combination of the most up to date thermally efficient cores, gaskets and infills, producing a high-performance window system with excellent thermal and acoustic performances.
- This 80mm window has a glazing variance of 28mm – 52mm incorporating double or triple-glazed units.
- Fully weather tested to BS6375 by a registered UKAS approved testing laboratory.

**Opening Possibilities:** Tilt & Turn, Casement, Hopper, Top Hung, Side Hung.



## Tech Features:

- Includes multi-point locking for added security.
- Excellent thermal performance.
- Eco-friendly polyamide core.
- Glazing range 28mm – 52mm.
- Identical sight lines throughout.
- Matching rebate doors available.
- Available in single and dual colour or anodised finish.
- Qualicoat powder coating.
- Fully weather tested to BS6375 by a registered UKAS approved testing laboratory.





# Life-Enhancing Window

- The Life-Enhancing Window is specifically designed to meet the needs of people with limited mobility.
- Designed with the handle at the bottom of the frame, this turn & tilt system provides the user with continuous access to the handle allowing them to operate the window with minimal effort.
- It meets all the requirements of the 'Lifetime Homes Scheme' in the UK.
- Fully weather tested to BS6375 by a registered UKAS approved testing laboratory.

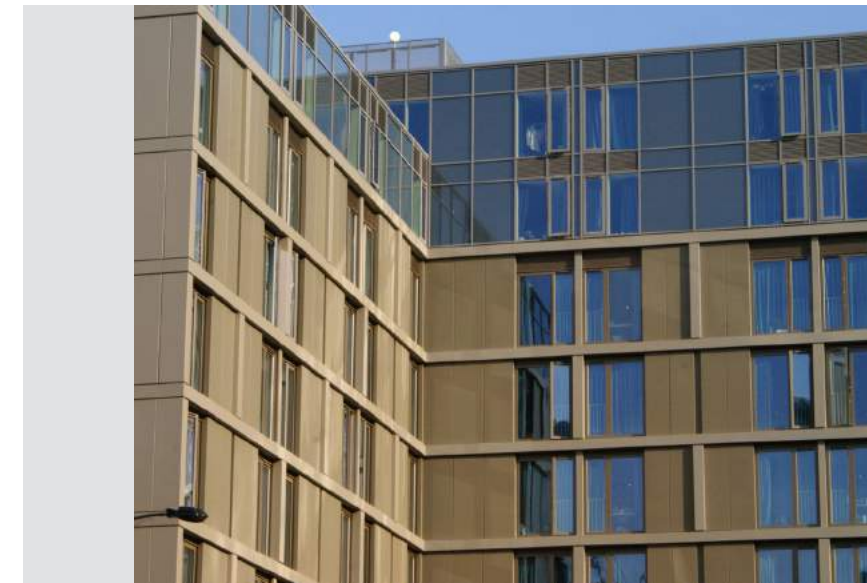
## Opening Possibilities: Turn & Tilt



## Tech Features:

- Specifically designed to meet needs of people with limited mobility.
- Meets all the requirements of the 'Lifetime Homes Scheme' in the UK.
- Available with our ST Window Suite.
- Matching rebate doors available.
- Superb thermal performance.
- Eco-friendly polyamide core.
- Maximum size 900mm x 1500mm.
- Glazing variants are 28mm - 52mm.
- Identical sight lines throughout.
- Available in single and dual colour or anodised finish.
- Qualicoat powder coating.
- Fully weather tested to BS6375 by a registered UKAS approved testing laboratory.

## Available with ST Window Suite





# Juliet Balcony

- The Juliet Balcony is an innovative railing system that features a structural glass panel providing uninterrupted views and high fall protection for floor-to-ceiling windows.
- This system is designed to be installed with our high-performance French doors and Tilt & Turn Window/Door systems for residential developments.
- Multiple types of safety glass can be incorporated with the Juliet Balcony.
- The use of heat strengthened laminated glass is suggested.
- The Juliet balcony is usually installed on apartments or student accommodation, it is designed to bring the outside in, without obstructing your view.

**Glazing Possibilities:** Multiple types of safety glass can be incorporated with this system.

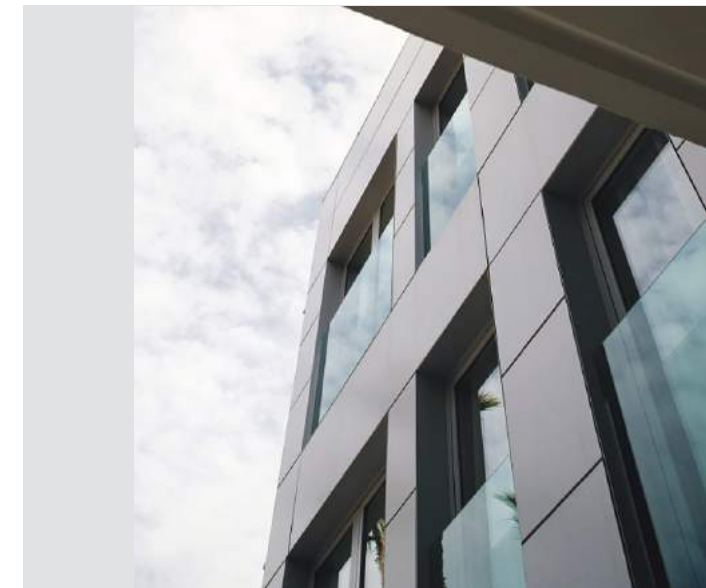


## Tech Features:

- Designed to be installed with our high-performance French doors and Tilt & Turn Window/Door systems.
- Innovative railing system designed with a minimalist glass panel to give uninterrupted views.
- The use of heat strengthened laminated glass is suggested.
- High fall protection with uninterrupted views.

## Finishes:

- Available in single and dual colour or anodised finish.
- Qualicoat powder coating.





# French Doors

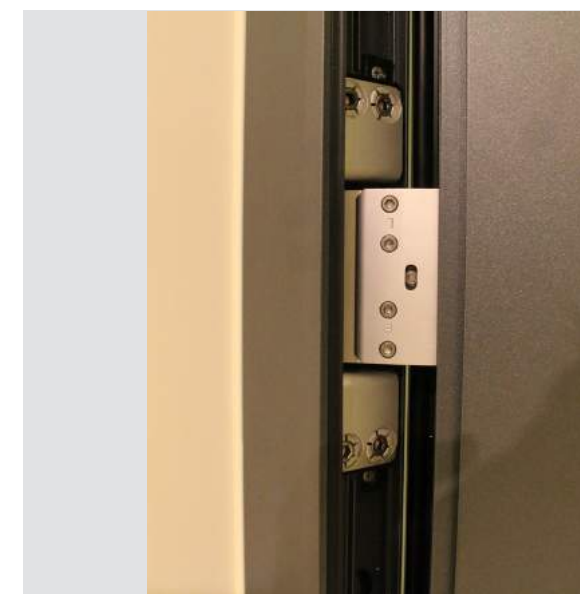
- APA Facade Systems French Doors are designed with standard or aesthetically pleasing concealed hinges.
- This system comes with the best thermal transmission coefficient across the French Door range.
- Our French Door profile is 70mm, with glazing opportunities of up to 52mm maximising the acoustic performance.
- Maximum dimensions per leaf for standard and concealed hinges is 1000mm x 2250mm.
- Profile thickness – 2mm.
- Available as open in or open out system.
- Fully tested to the highest BS EN standards including PAS24 by a registered UKAS approved testing laboratory.

**Opening Possibilities:** Available as a single or double door system with concealed hinges.



## Tech Features:

- Available with aesthetically pleasing concealed hinges.
- Available as either open in or open out.
- Manufactured with our 70mm profile.
- Fully weather tested to BS6375 by a registered UKAS approved testing laboratory.
- Available in single and dual colour or anodised finish.
- Qualicoat powder coating.





# Tilt & Turn Window / Door

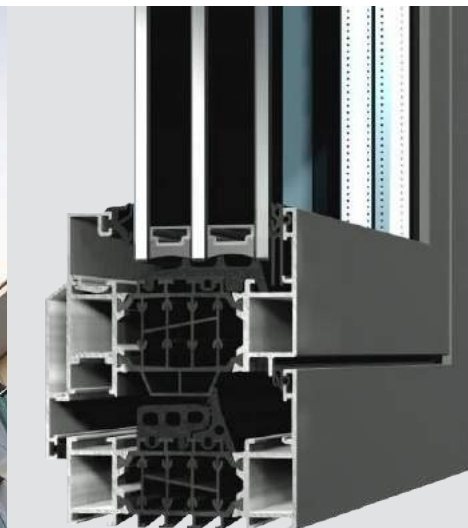
- Our Tilt & Turn system combines the elements of window and door systems to give the user multiple options for ventilation.
- The Tilt & Turn door opens inwards for increased safety, ventilation and easy upkeep.
- The Turn & Tilt system is manufactured using our thermally efficient 70mm or 80mm high-performance profiles, it's often used in high-rise apartment buildings. Combined with our Juliet balcony, it provides a safe way to bring the outside in, without obstructing your view.
- Fully weather tested to BS6375 by a registered UKAS approved testing laboratory.

**Opening Possibilities:** Tilt & Turn.



## Tech Features:

- Superb thermal performance.
- Available with our ST Window/Door Suite.
- Eco-friendly polyamide core.
- Glazing variant of 28mm – 52mm.
- Identical sight lines throughout.
- Available in single and dual colour or anodised finish.
- Qualicoat powder coating.
- Fully weather tested to BS6375 by a registered UKAS approved testing laboratory.





# Bi-Fold Doors

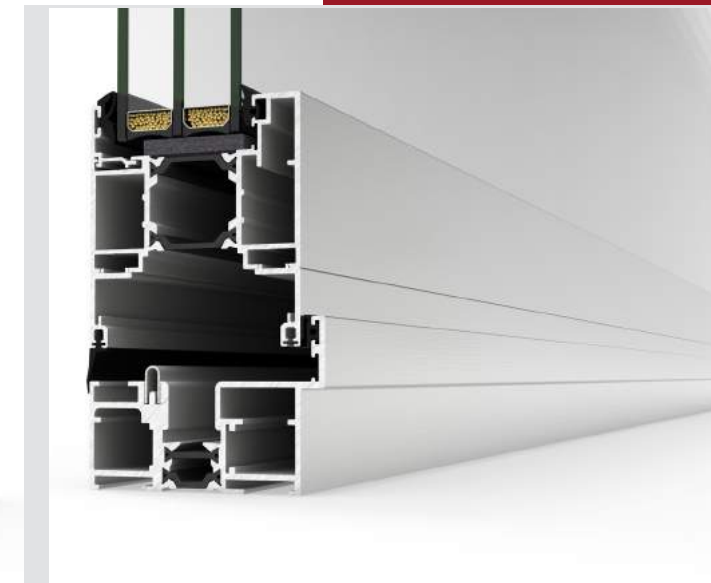
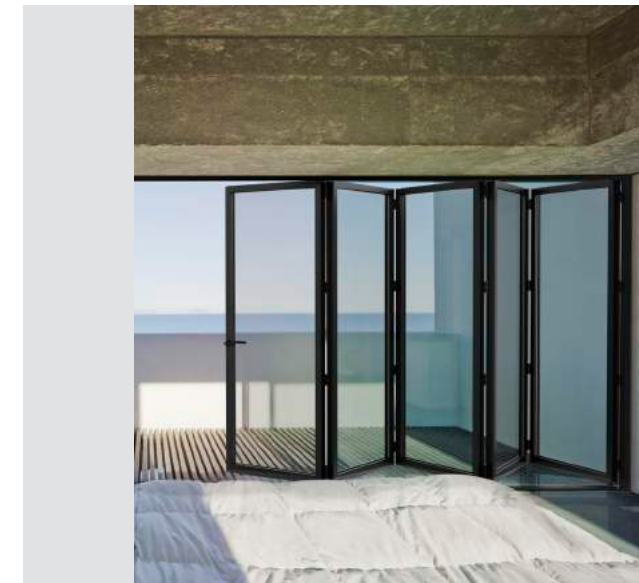
- Our highly versatile Bi-Fold door system is available with up to 14 sashes (max size/ sash 1000mm x 2250mm or 120kg). They have internal and external opening possibilities with an even or odd number of sashes.
- With its thermally efficient polyamide cores ranging from 24mm to 44mm the Bi-Fold door has an excellent thermal performance.
- The design on this system allows you to insert the bottom of the frame into the pavement, leaving the threshold completely hidden.
- The wheels and rollers are also concealed when the door is in the closed position providing a streamlined, aesthetically pleasing finish.

**Opening Possibilities:** Multiple Opportunities up to 14 sashes.



## Tech Features:

- Frame 73mm.
- Sash 73mm.
- Maximum glazing opportunities 45mm.
- Opening possibilities folding up to 14 sashes.
- Profile thickness 1.8mm.
- Polyamide strip frame 20mm / Sash 30mm.
- Maximum size/sash 1000mm x 2250mm.
- Available in single and dual colour or anodised finish.
- Qualicoat powder coating.





# Sustainability

- Our design team is committed to excellent environmental practice towards a green, sustainable environment.
- Our aluminium glazing profiles are designed and manufactured to conform with industry environmental standards, helping you achieve BREEAM and LEED certification.



The Roy Apartments – Halifax



Colliers Wood Tower Apartments – London



Olympic Way Apartments – London



New Mill Student Accommodation Dublin

- In addition to our profile's inherent life expectancy, aluminium is infinitely recyclable, making it the material of choice for balancing the demand of a growing economy with the need to help preserve the environment.
- Recycling aluminium requires 95% less energy and thus produces 95% fewer greenhouse gas emissions (GHG) than produced during primary production whilst still retaining 100% of the material's mechanical properties.

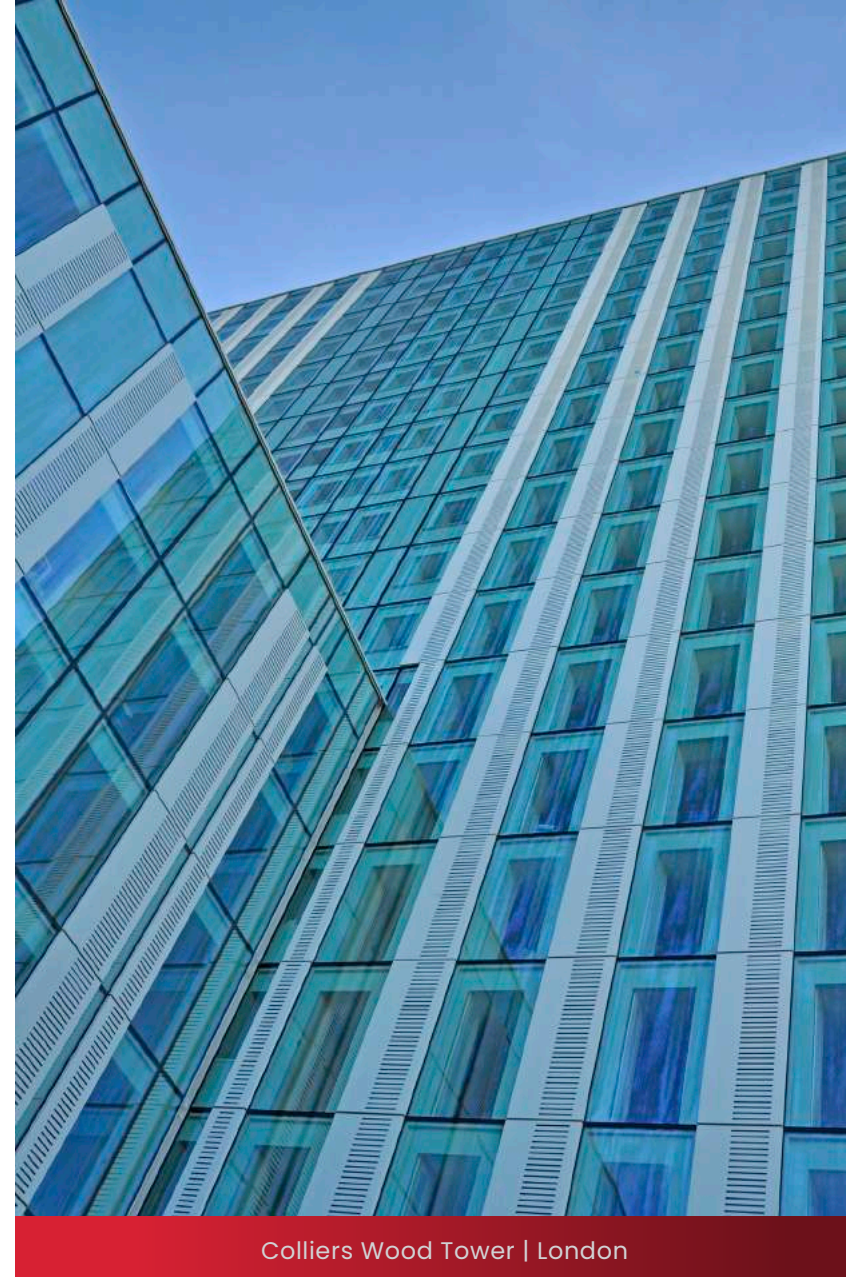




## Apartments



## High Rise



## Student Accommodation



## Large Houses





# Contact Us

## If you require any extra information regarding:



Our aluminium window, door, facade, louvre or solar shading systems.



An upcoming project you would like us to price.



To organise a meeting or training day.



To get in touch with a member of our technical department.

### Dublin

Unit 12, Parkmore Industrial Estate,  
Longmile Road,  
Dublin D12 VXH9

**Tel:** +353 (0) 1 450 9102

---

### Leeds

Unit 11 Parkview Court,  
St Pauls Road,  
Shipley, West Yorkshire BD18 3DZ

**Tel:** +44 (0) 1 274 591403

---

### London

Regus House, Highbridge,  
Oxford Road,  
Uxbridge, Middlesex UB8 1HR

**Tel:** +44 (0) 1895 876259

---

### Boston

75 State St, 1st Floor,  
Boston, MA 02109,  
United States

**Tel:** +1 617 8546587