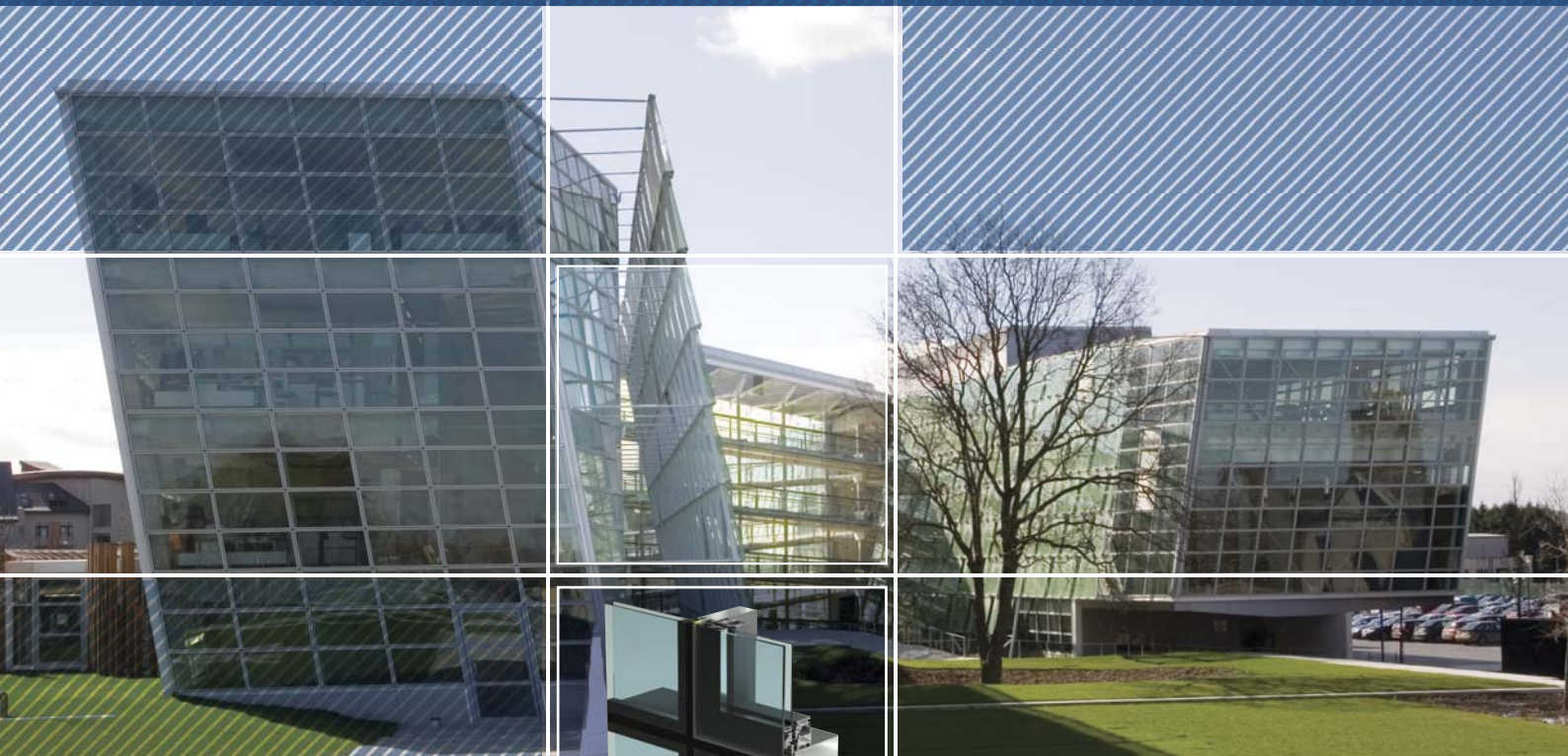


## Aluminium in Architecture



**FACADE TB50 SG**  
- Structural glazed curtain wall system



**FACADE TB40**  
- Bonded modular system



**FACADE TB35HI**  
- Bead glazed modular system



**FACADE TB50**  
- Curtain wall system

## FACADE TB50



### CURTAIN WALL SYSTEM

The Facade TB50 curtain wall system is the ideal choice when it comes to providing a facade or atrium roof light. Combining structural strength with aesthetic appearance the thermally broken, drained and ventilated Facade TB50 system offers the opportunity to include modern features in a building without compromising the thermal, acoustic or structural properties required to meet the highest standards in construction. A feature of the Facade TB50 is the multiple choice of the mullions and transoms allowing designers achieve large spans whilst maintaining a 50mm sight line. The Facade TB50 has been fully tested to all the relevant EN and CWCT standards and carries the mandatory CE mark. Features such as bold horizontal lines in the facade can be created using the elliptical shaped capping which is part of the system.

### ADVANTAGES

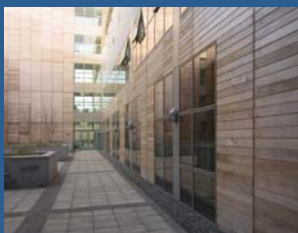
- *Highly versatile system*
- *Excellent thermal & acoustic properties*
- *50mm sight line*
- *Fully tested to meet with the requirements of the CE mark and CWCT*



APA Facade Systems reserve the right to change specifications without prior knowledge



## FACADE TB35HI



APA Facade Systems reserve the right to change specifications without prior knowledge

### BEAD GLAZED MODULAR SYSTEM

The TB35HI is a modular framed facade system with excellent thermal properties. TB35HI uses the Facade TB50 curtain wall system as its supporting grid, creating flexibility and allowing it to be used in various grid sizes. Combinations of the different framing profiles allow for the integration of raised and flat insulated panels along with concealed top hung open out sashes. Using these special integrated panels and sashes the visual consistency of the facade is not compromised. The slim appearance of TB35HI Facade is a popular choice with designers because of its reduced external sight lines. Each modular frame is 34mm in width and combined with the shadow gap of 14mm the overall site line is maintained at 80mm making the system one of the slimmest on the Irish market. The TB35HI facade system is available in single or dual colour.

### ADVANTAGES

- 80mm external sight line
- Excellent thermal performance
- Available in dual colour
- Integrated vent & panel system available
- 14mm consistent shadow gap



## FACADE TB40



APA Facade Systems reserve the right to change specifications without prior knowledge

### BONDED MODULAR SYSTEM

The TB40 modular system achieves its stylish look because the glass is bonded to an internal frame and is then fixed to the Facade TB50 system grid, thereby exposing no framing to the external surfaces of the facade.

Using the Facade TB50 as a support grid the TB40 system can be installed in a variety of grid sizes whilst still maintaining its excellent structural qualities. Concealed sashes and integrated insulated panels all form part of the system and do not interrupt the visual consistency of the modular grid. With a shadow gap of 20mm and the versatility of conventional curtain walling the TB40 modular system is becoming the designer's choice, creating light and space using a modern and fashionable concept.

### ADVANTAGES

- No visible external framing or capping
- Modular grid for consistency
- Concealed vents available
- Flush appearance





## FACADE TB50 SG



APA Facade Systems reserve the right to change specifications without prior knowledge

### STRUCTURAL GLAZED CURTAIN WALL SYSTEM

Using the Facade TB50 curtain wall system as its support grid and with no need for capping to retain the glass in place, the Facade TB50 SG system produces a flush finish to the exterior face of the facade. The glass is secured in place using toggles, which are placed into channels, these form part of the central seal of the double glazed units. All joints are weathered using a silicone seal producing a flush non-interrupted surface of glass-to-glass butt joints. Fitting of the edges of the double glazed units is not required when a black spacer bar along with a special Dow Corning edge seal is used.

The double glazed units are manufactured in Ireland ensuring short lead times.

### ADVANTAGES

- 50mm sight line
- Non interrupted external surface
- Concealed sashes available





## APA FACADE SYSTEMS

Over the past decades APA Facade Systems has become one of the market leaders in the supply of quality aluminium systems. APA supplies an extensive range of high specification aluminium systems to the Irish market. These include curtain wall facades, high performance window, door and modular framed systems. APA's experienced team welcomes the opportunity of discussing designs and solutions with the architect throughout all stages of building projects.

### TURNING ARCHITECTURAL DESIGNS INTO REALITY

- Curtain wall systems
- Modular framed systems
- High performance Window and Door Systems
- Structurally bonded framed systems
- Solar Shading



**UK:** Unit 11 Parkview Court, St. Paul's Road, Shipley, BD18 3DZ. Tel: + 0044 (0)1274 591 403 [www.apafacadesystems.com](http://www.apafacadesystems.com)  
**IRELAND:** Unit 12, Parkmore Industrial Estate, Longmile Road, Dublin 12. Tel: + 353 1 4509102