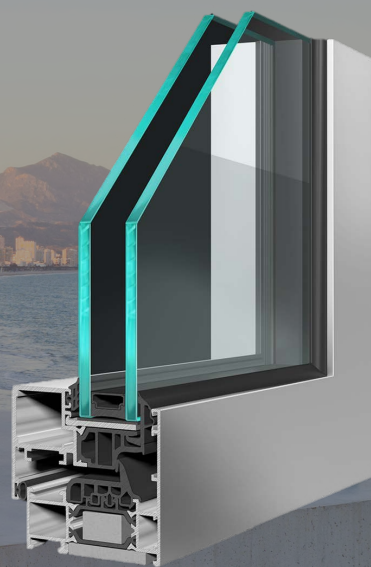


WWW.APAFACADESYSTEMS.COM

INFO@APAFACADESYSTEMS.COM

APA
FACADE
SYSTEMS

ST70 CONCEALED SASH



SLIM DESIGN WITH SURFACE OF ONLY 66MM

Design

APA Facade Systems ST70 Concealed Sash window has a slim design, with a surface of only 66 mm from the exterior. The slim profile provides the interior of the building with a substantial increase in luminosity.

A 35 mm thermally broken zone is created by using a variety of polyamide cores as part of the frame and sash. This allows for a thermal transmission as low as 1.0 W/m²K to be achieved when the ratio of glass to aluminium is correct, maximising its energy.

Performance

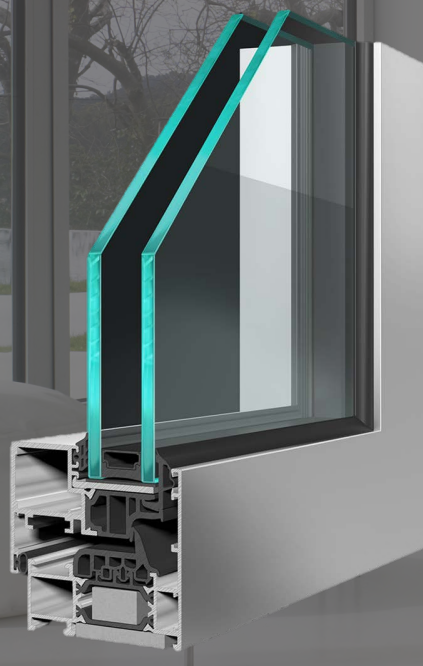
The ST70 Concealed Sash meets all the BS/EN regulations demonstrating excellent water tightness, air permeability, and wind resistance values.

Even with its slim design, our concealed sash is available with large sash dimensions with a maximum size of 1200 mm x 2400 mm or 160 kg.

With the possibility of glazing high-performance double glazed units up to 40mm thick, this highly insulated slimline window system is the ideal choice for apartments, houses, or student accommodation.

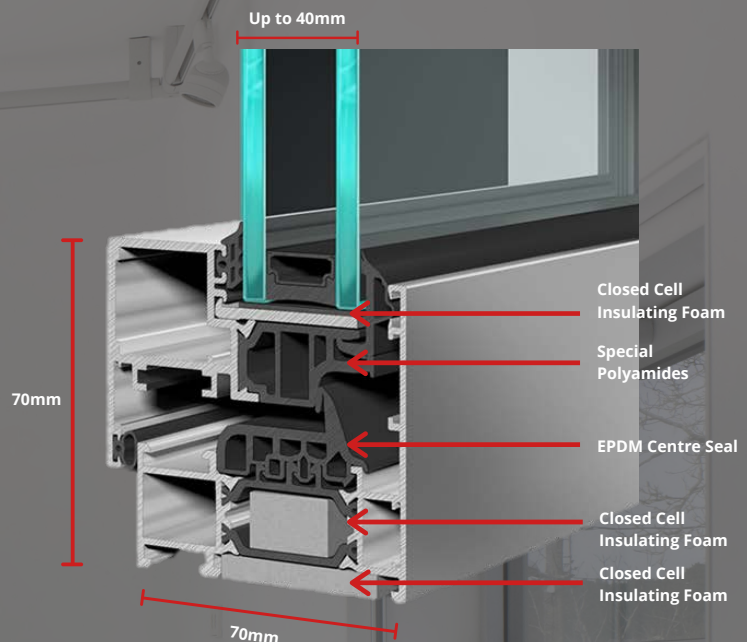
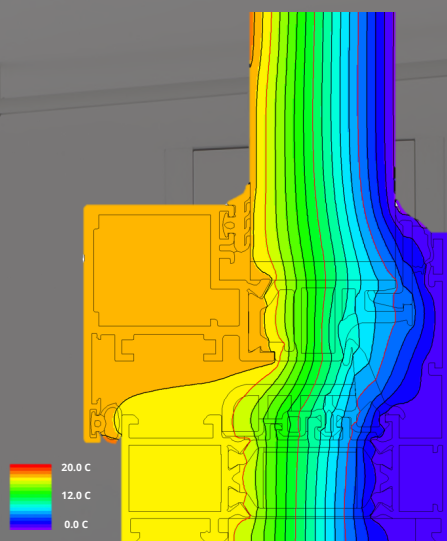
Opening Possibilities

- Side hung open-in
- Bottom hung open-in
- Bottom hung open-out
- Tilt and turn



Properties

- Whole window U_w value as low as $1.0 \text{ W/m}^2\text{K}$
- Tested to Pas 24 and SBD standards
- Fabricated using recycled aluminium and plastic materials
- Double glazing units available up to 40 mm
- Exterior surface of 66 mm
- Maximum Size/Sash - 1200 mm x 2400 mm
- Maximum Weight/Sash - 160 kg
- Single or dual colour available - Qualicoat (RAL Colours)
- Can be pre-assembled in-house saving installation time/cost



Performance Data

Whole window U_w value as low as: $1.0 \text{ W/m}^2\text{K}$
Air Tightness: Class 4 - 600 Pa
Water Tightness: Class E1650
Wind load resistance: Class 5

Reference test: 1200 mm x 1400 mm – 2 sashes

Contact us if you require any extra information regarding:



Our aluminium window, door, facade, louvre or solar shading systems.

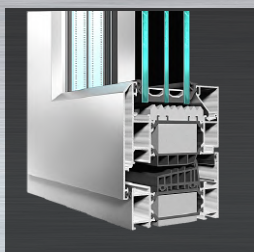


To organise a meeting or training day.

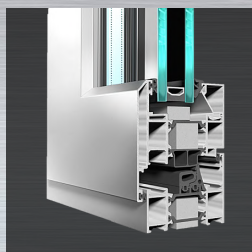


To get in touch with a member of our technical department.

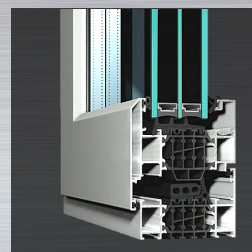
Our Window & Door Suite



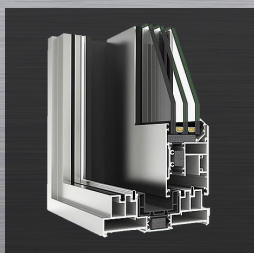
ST90 Window
System



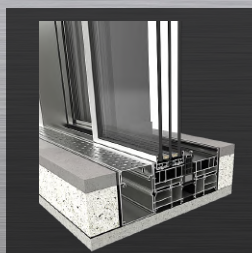
ST70 HI



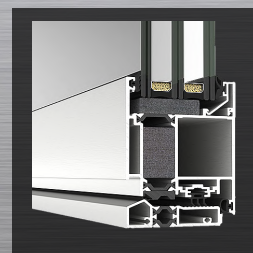
ST80 Window
System



ST4-600 Lift &
Slide



ST Vision
Plus



ST Millennium
Door